

# **Clongriffin to City Centre Core Bus Corridor Scheme**

November 2021

## **Preferred Route Option Report**

### **Appendix A**

Preferred Route Drawings





# BUSCONNECTS DUBLIN

## CORE BUS CORRIDORS INFRASTRUCTURE WORKS

### CLONGRIFFIN TO CITY CENTRE CORE BUS CORRIDOR SCHEME

#### GENERAL ARRANGEMENT

**DRAWING SERIES NUMBER(S)**

- BCIDA-ACM-GEO\_IX-0001\_XX\_00-DR-CR-0001
- BCIDA-ACM-GEO\_KP-0001\_XX\_00-DR-CR-0001
- BCIDA-ACM-GEO\_GA-0006\_XX\_00-DR-CR-0006 to 0021

**DRAWING SERIES DESCRIPTION**

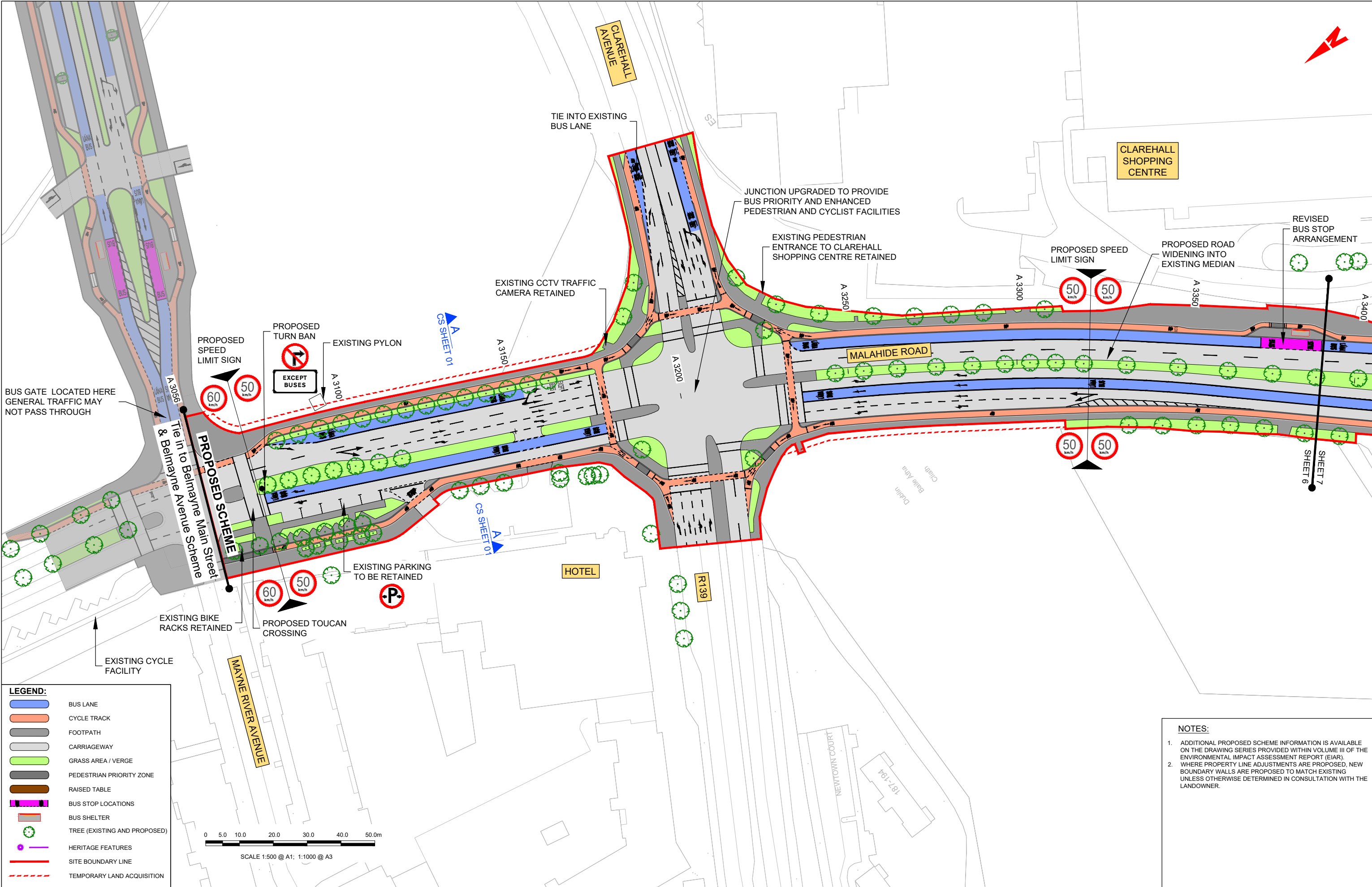
- CLONGRIFFIN TO CITY CENTRE CORE BUS CORRIDOR SCHEME. GENERAL ARRANGEMENT. COVER SHEET
- CLONGRIFFIN TO CITY CENTRE CORE BUS CORRIDOR SCHEME. GENERAL ARRANGEMENT. KEY PLAN
- CLONGRIFFIN TO CITY CENTRE CORE BUS CORRIDOR SCHEME. GENERAL ARRANGEMENT

Disclaimer	a. © National Transport Authority (NTA) 2021. This drawing is confidential and the copyright in it is owned by NTA. This drawing must not be either loaned, copied or otherwise reproduced in whole or in part or used for any purpose without the prior permission of NTA.	b. This drawing is to be used for the design element identified in the titleblock. Other information shown is to be considered indicative only. The drawing is to be read in conjunction with all other relevant design drawings.	c. O.S. data used for plans are printed under © Ordnance Survey Ireland Government of Ireland. All rights reserved. Licence Number 2021/OSI_NMA_180 National Transport Authority. All elevations are in metres and relate to OSI Geoid Model (OSGM15) Mean Head. All Co-ordinates are in Irish	Transverse Mercator Grid (ITM) as defined by OSI active local GPS station.	d. Information concerning the position of apparatus shown on this drawing is to be considered indicative only. The drawing is to be read in conjunction with all other relevant design drawings.	e. The information contained herein has been provided by the NTA but does not purport to be comprehensive or final. Recipients should not rely on the information. Neither the NTA nor any of its directors, officers, employees, agents, stakeholders or advisers make any representation or warranty as to, or accept any liability or responsibility in relation to, the adequacy, accuracy, reasonableness or completeness of the information provided as part of this document or any matter on which the information is based (including but not limited to loss or damage arising as a result of reliance by recipients on the information or any part of it). Any liabilities are hereby expressly disclaimed.	<div><div><div></div><div>Údarás Náisiúnta Iompair National Transport Authority</div></div><div><table><tr><td>Date</td><td>03/12/21</td><td>Scale</td><td>NTS @ A1 @ A3</td></tr><tr><td>Project Code</td><td>BCIDA</td><td>Originator Code</td><td>ACM</td></tr></table></div></div>	Date	03/12/21	Scale	NTS @ A1 @ A3	Project Code	BCIDA	Originator Code	ACM	<div><div><div></div><div></div></div><div><table><tr><td>Drawn</td><td>P.POCZATKO</td><td>Checked</td><td>J.HAWE</td><td>Approved</td><td>C.ACTON</td></tr></table></div></div>	Drawn	P.POCZATKO	Checked	J.HAWE	Approved	C.ACTON	Engineering Designer	Client	Programme Title	BUSCONNECTS DUBLIN CORE BUS CORRIDORS INFRASTRUCTURE WORKS	Drawing Title	CLONGRIFFIN TO CITY CENTRE CORE BUS CORRIDOR SCHEME GENERAL ARRANGEMENT COVER SHEET	Drawing File Name	BCIDA-ACM-GEO_IX-0001_XX_00-DR-CR-0001	Sheet Number	01 of 01	Status	A	Rev	M01
								Date	03/12/21	Scale	NTS @ A1 @ A3																									
								Project Code	BCIDA	Originator Code	ACM																									
Drawn	P.POCZATKO	Checked	J.HAWE	Approved	C.ACTON																															









LEGEND:

BUS LANE

CYCLE TRACK

FOOTPATH

CARRIAGEWAY

GRASS AREA / VERGE

PEDESTRIAN PRIORITY ZONE

RAISED TABLE

BUS STOP LOCATIONS

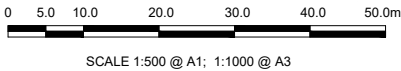
BUS SHELTER

TREE (EXISTING AND PROPOSED)

HERITAGE FEATURES

SITE BOUNDARY LINE

TEMPORARY LAND ACQUISITION



- NOTES:
1.

ADDITIONAL PROPOSED SCHEME INFORMATION IS AVAILABLE ON THE DRAWING SERIES PROVIDED WITHIN VOLUME III OF THE ENVIRONMENTAL IMPACT ASSESSMENT REPORT (EIAR).
2.

WHERE PROPERTY LINE ADJUSTMENTS ARE PROPOSED, NEW BOUNDARY WALLS ARE PROPOSED TO MATCH EXISTING UNLESS OTHERWISE DETERMINED IN CONSULTATION WITH THE LANDOWNER.

Disclaimer

a. © National Transport Authority (NTA) 2021. This drawing is confidential and the copyright in it is owned by NTA. This drawing must not be either loaned, copied or otherwise reproduced in whole or in part or used for any purpose without the prior permission of NTA.

b. This drawing is to be used for the design element identified in the titlebox. Other information shown is to be considered indicative only. The drawing is to be read in conjunction with all other relevant design drawings.

c. O.S. data used for plans are printed under © Ordnance Survey Ireland Government of Ireland. All rights reserved. Licence Number 2021/OS\_NMA\_180 National Transport Authority. All elevations are in metres and relate to OSI Geoid Model (OSGM15) Mean Head. All Co-ordinates are in Irish Transverse Mercator Grid (ITM) as defined by OSI active local GPS station.

d. Information concerning the position of apparatus shown on this drawing is based on drawings supplied by the utility owners and/or the utility works contractor, whilst every care has been taken in the preparation of this drawing, positions should be taken as approximate and are intended for general guidance only and no representation is made by the NTA as to the accuracy, completeness, sufficiency or otherwise of this drawing and the position of the apparatus. The information contained herein does not purport to be comprehensive or final as the apparatus is subject to being altered and/or superceded. Recipients should not rely on this information. Any liabilities are hereby expressly disclaimed.

e. The information contained herein has been provided by the NTA but does not purport to be comprehensive or final. Recipients should not rely on the information. Neither the NTA nor any of its directors, officers, employees, agents, stakeholders or advisers make any representation or warranty as to, or accept any liability or responsibility in relation to, the adequacy, accuracy, reasonableness or completeness of the information provided as part of this document or any matter on which the information is based (including but not limited to loss or damage arising as a result of reliance by recipients on the information or any part of it). Any liabilities are hereby expressly disclaimed.

Project Ireland 2040

Building Ireland's Future

Rev	Date	Drm	Chk'd	App'd	Description
M01	03/12/21	PP	JH	CA	ISSUE FOR PHASE 4: PLANNING

Client

NTA

Údarás Náisiúnta Iompair

National Transport Authority

Date

03/12/21

Project Code

BCIDA

Scale

1:500 @ A1  
1:1000 @ A3

Originator Code

ACM

Engineering Designer

AECOM

MOTT MACDONALD

Drawn

P.POCZATKO

Checked

J.HAWE

Approved

C.ACTON

Programme Title

**BUSCONNECTS DUBLIN**  
**CORE BUS CORRIDORS INFRASTRUCTURE WORKS**

Drawing Title

CLONGRIFFIN TO CITY CENTRE CORE BUS CORRIDOR SCHEME  
GENERAL ARRANGEMENT

Drawing File Name

BCIDA-ACM-GEO\_GA-0001\_XX\_00-DR-CR-0006

Sheet Number

06 of 21

Status

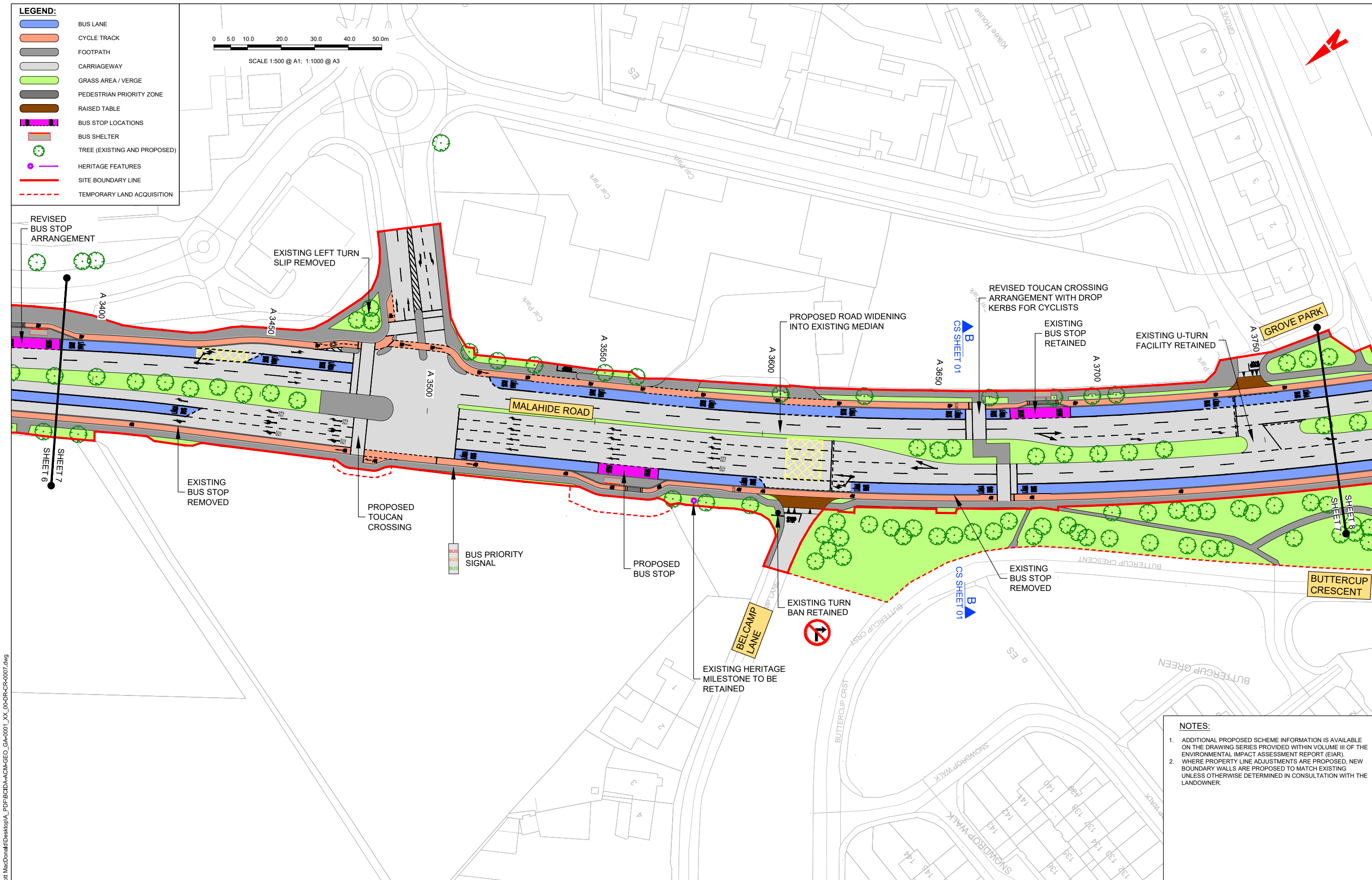
A

Rev

M01

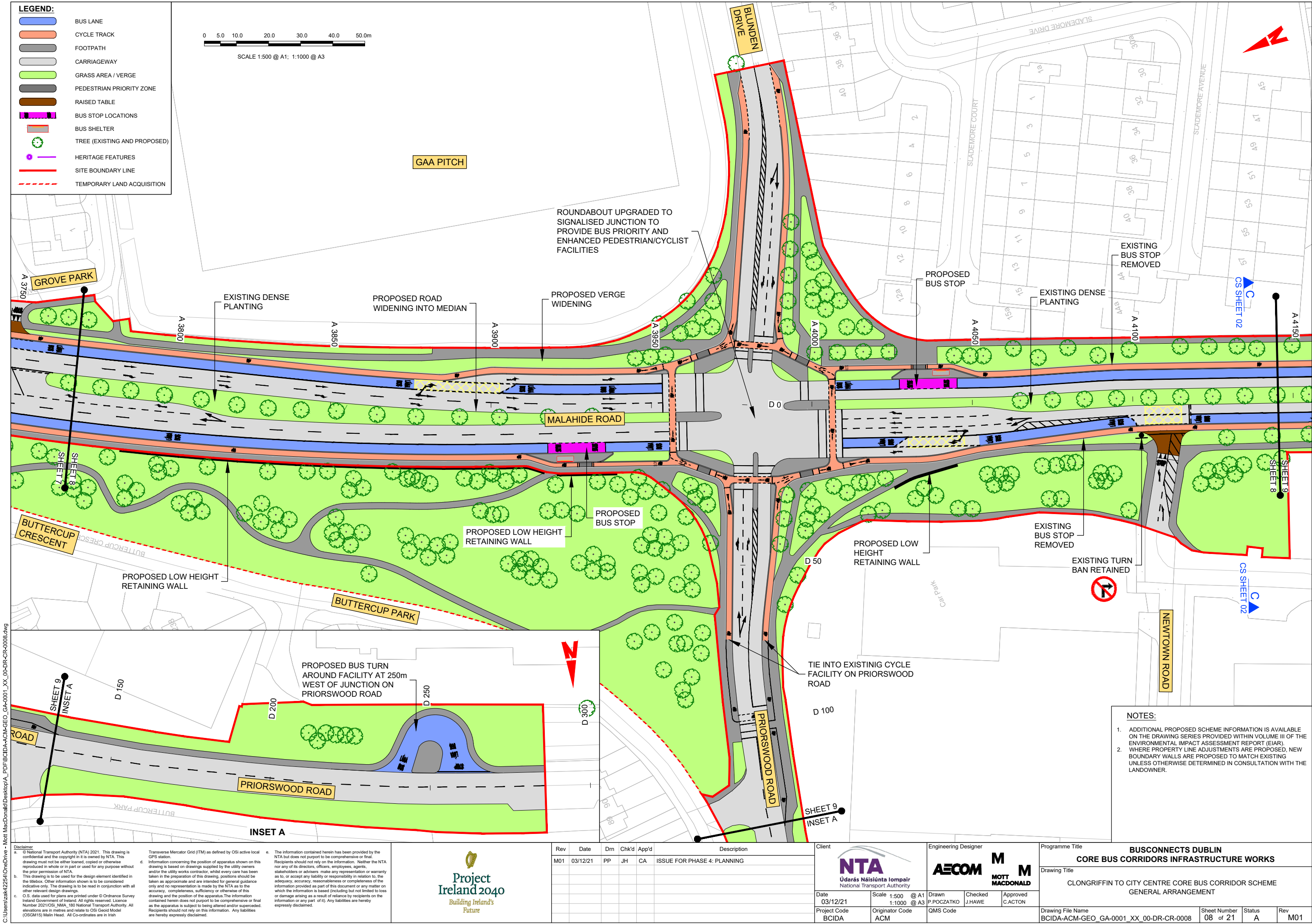
DO NOT SCALE USE FIGURED DIMENSIONS ONLY





<div>Disclaimer</div> <div>a. © National Transport Authority (NTA) 2021. This drawing is confidential and the copyright in it is owned by NTA. This drawing must not be either loaned, copied or otherwise reproduced in whole or in part or used for any purpose without the prior permission of NTA.</div> <div>b. This drawing is to be used for the design element identified in the titlebox. Other information shown is to be considered indicative only. The drawing is to be read in conjunction with all other relevant design drawings.</div> <div>c. O.S. data used for plans are printed under © Ordnance Survey Ireland Government of Ireland. All rights reserved. Licence Number 2021/OSI_NMA_180 National Transport Authority. All elevations are in metres and relate to OSI Geoid Model (OSGM 15) Mean Head. All Co-ordinates are in Irish</div>										<div>Transverse Mercator Grid (TM) as defined by OSI active local GPS station.</div> <div>d. Information concerning the position of apparatus shown on this drawing is based on data supplied by the utility owners and/or the utility works contractor, whilst every care has been taken in the preparation of this drawing, positions should be taken as approximate and are intended for general guidance only and no representation is made by the NTA as to the accuracy, completeness, sufficiency or otherwise of this drawing and the position of the apparatus. The information contained herein does not purport to be comprehensive or final as the apparatus is subject to being altered and/or superseded. Recipients should not rely on this information. Any liabilities are hereby expressly disclaimed.</div>										<div>The information contained herein has been provided by the NTA but does not purport to be comprehensive or final. Recipients should not rely on the information. Neither the NTA nor any of its directors, officers, employees, agents, stakeholders or advisers make any representation or warranty as to, or accept any liability or responsibility in relation to, the adequacy, accuracy, reasonableness or completeness of the information provided as part of this document or any matter on which the information is based (including but not limited to loss or damage arising as a result of reliance by recipients on the information) and no representation is made by the NTA as to the accuracy, completeness, sufficiency or otherwise of this drawing and the position of the apparatus. The information contained herein does not purport to be comprehensive or final as the apparatus is subject to being altered and/or superseded. Recipients should not rely on this information. Any liabilities are hereby expressly disclaimed.</div>										<div><div><div><div><div><div></div><div>Rev</div></div><div><div>Date</div><div>03/12/21</div></div><div><div>Drn</div><div>PP</div></div><div><div>Chk'd</div><div>JH</div></div><div><div>App'd</div><div>CA</div></div></div><div><div>Description</div><div>ISSUE FOR PHASE 4: PLANNING</div></div></div></div></div>										<div><div><div><div><div><div></div><div>NTA</div><div>Údaráis Náisiúnta Iompair</div><div>National Transport Authority</div></div></div><div><div><div><div><div></div><div>AECOM</div></div><div><div>MOTT</div><div>MACDONALD</div></div></div></div></div></div><div><div>Date</div><div>03/12/21</div><div><div>Scale</div><div>1:500 @ A1</div><div>1:1000 @ A3</div></div><div><div>Drawn</div><div>P.GOCZATKO</div></div><div><div>Checked</div><div>J.HAWE</div></div><div><div>Approved</div><div>C.ACTON</div></div></div><div><div><div>Project Code</div><div>BCIDA</div></div><div><div>Originator Code</div><div>ACM</div></div><div><div>QMS Code</div><div></div></div></div></div></div>										<div><div><div><div><div><div></div><div>Engineering Designer</div></div></div><div><div><div><div><div></div><div>Programme Title</div></div><div><div>BUSCONNECTS DUBLIN</div><div>CORE BUS CORRIDORS INFRASTRUCTURE WORKS</div></div></div></div></div></div><div><div><div><div><div></div><div>Drawing Title</div></div><div><div>CLONGRIFFIN TO CITY CENTRE CORE BUS CORRIDOR SCHEME</div><div>GENERAL ARRANGEMENT</div></div></div></div></div></div><div><div><div><div><div><div></div><div>Drawing File Name</div></div><div><div>BCIDA-ACM-Geo_GA-0001_XX_00-DR-CR-0007</div></div></div><div><div><div><div><div></div><div>Sheet Number</div></div><div><div>07 of 21</div></div></div><div><div><div><div><div></div><div>Status</div></div><div><div>A</div></div></div><div><div><div><div><div></div><div>Rev</div></div><div><div>M01</div></div></div></div></div></div></div></div></div></div></div></div></div>									
--	--	--	--	--	--	--	--	--	--	--	--	--	--	--	--	--	--	--	--	---	--	--	--	--	--	--	--	--	--	--	--	--	--	--	--	--	--	--	--	--	--	--	--	--	--	--	--	--	--	---	--	--	--	--	--	--	--	--	--

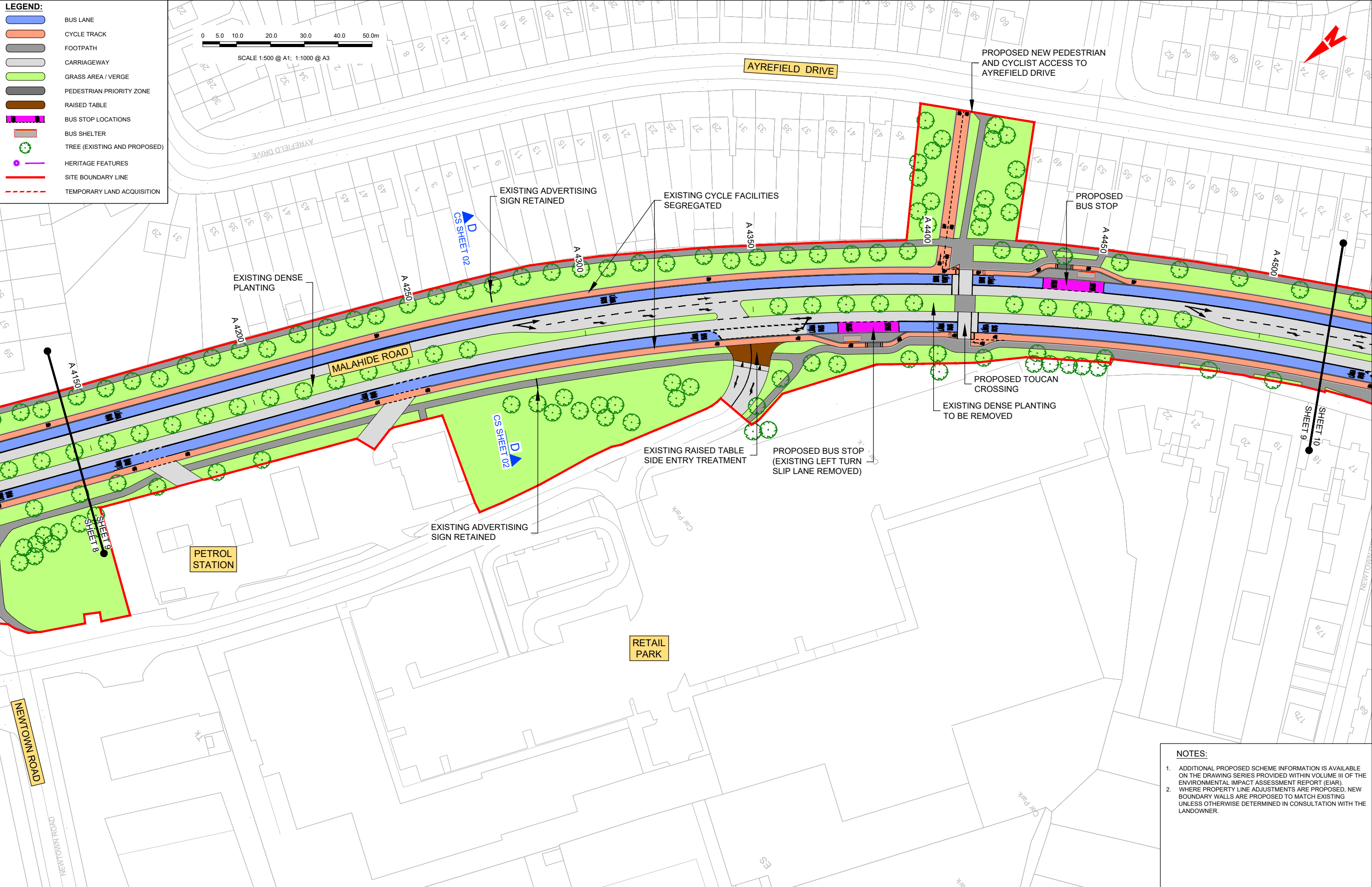
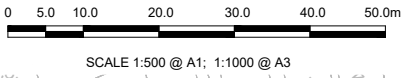






**LEGEND:**

- BUS LANE
- CYCLE TRACK
- FOOTPATH
- CARRIAGEWAY
- GRASS AREA / VERGE
- PEDESTRIAN PRIORITY ZONE
- RAISED TABLE
- BUS STOP LOCATIONS
- BUS SHELTER
- TREE (EXISTING AND PROPOSED)
- HERITAGE FEATURES
- SITE BOUNDARY LINE
- TEMPORARY LAND ACQUISITION



- NOTES:**
- ADDITIONAL PROPOSED SCHEME INFORMATION IS AVAILABLE ON THE DRAWING SERIES PROVIDED WITHIN VOLUME III OF THE ENVIRONMENTAL IMPACT ASSESSMENT REPORT (EIA).
  - WHERE PROPERTY LINE ADJUSTMENTS ARE PROPOSED, NEW BOUNDARY WALLS ARE PROPOSED TO MATCH EXISTING UNLESS OTHERWISE DETERMINED IN CONSULTATION WITH THE LANDOWNER.

**Disclaimer**

a. © National Transport Authority (NTA) 2021. This drawing is confidential and the copyright in it is owned by NTA. This drawing must not be either loaned, copied or otherwise reproduced in whole or in part or used for any purpose without the prior permission of NTA.

b. This drawing is to be used for the design element identified in the titleblock. Other information shown is to be considered indicative only. The drawing is to be read in conjunction with all other relevant design drawings.

c. O.S. data used for plans are printed under © Ordnance Survey Ireland Government of Ireland. All rights reserved. Licence Number 2021/OS\_NMA\_180 National Transport Authority. All elevations are in metres and relate to OSI Geoid Model (OSGM15) Mean Head. All Co-ordinates are in Irish Transverse Mercator Grid (ITM) as defined by OSI active local GPS station.

d. Information concerning the position of apparatus shown on this drawing is based on drawings supplied by the utility owners and/or the utility works contractor, whilst every care has been taken in the preparation of this drawing, positions should be taken as approximate and are intended for general guidance only and no representation is made by the NTA as to the accuracy, completeness, sufficiency or otherwise of this drawing and the position of the apparatus. The information contained herein does not purport to be comprehensive or final as the apparatus is subject to being altered and/or superseded. Recipients should not rely on this information. Any liabilities are hereby expressly disclaimed.

e. The information contained herein has been provided by the NTA but does not purport to be comprehensive or final. Recipients should not rely on the information. Neither the NTA nor any of its directors, officers, employees, agents, stakeholders or advisers make any representation or warranty as to, or accept any liability or responsibility in relation to, the adequacy, accuracy, reasonableness or completeness of the information provided as part of this document or any matter on which the information is based (including but not limited to loss or damage arising as a result of reliance by recipients on the information or any part of it). Any liabilities are hereby expressly disclaimed.

Rev	Date	Drm	Chk'd	App'd	Description
M01	03/12/21	PP	JH	CA	ISSUE FOR PHASE 4: PLANNING

Building Ireland's Future

Údarás Náisiúnta Iompair  
National Transport Authority

Date: 03/12/21

Scale: 1:500 @ A1  
1:1000 @ A3

Project Code: BCIDA

Originator Code: ACM

Engineering Designer: P.POCZATKO

Checked: J.HAWE

Approved: C.ACTON

Programme Title: **BUSCONNECTS DUBLIN**  
**CORE BUS CORRIDORS INFRASTRUCTURE WORKS**

Drawing Title: CLONGRIFFIN TO CITY CENTRE CORE BUS CORRIDOR SCHEME  
GENERAL ARRANGEMENT

Drawing File Name: BCIDA-ACM-GEO\_GA-0001\_XX\_00-DR-CR-0009

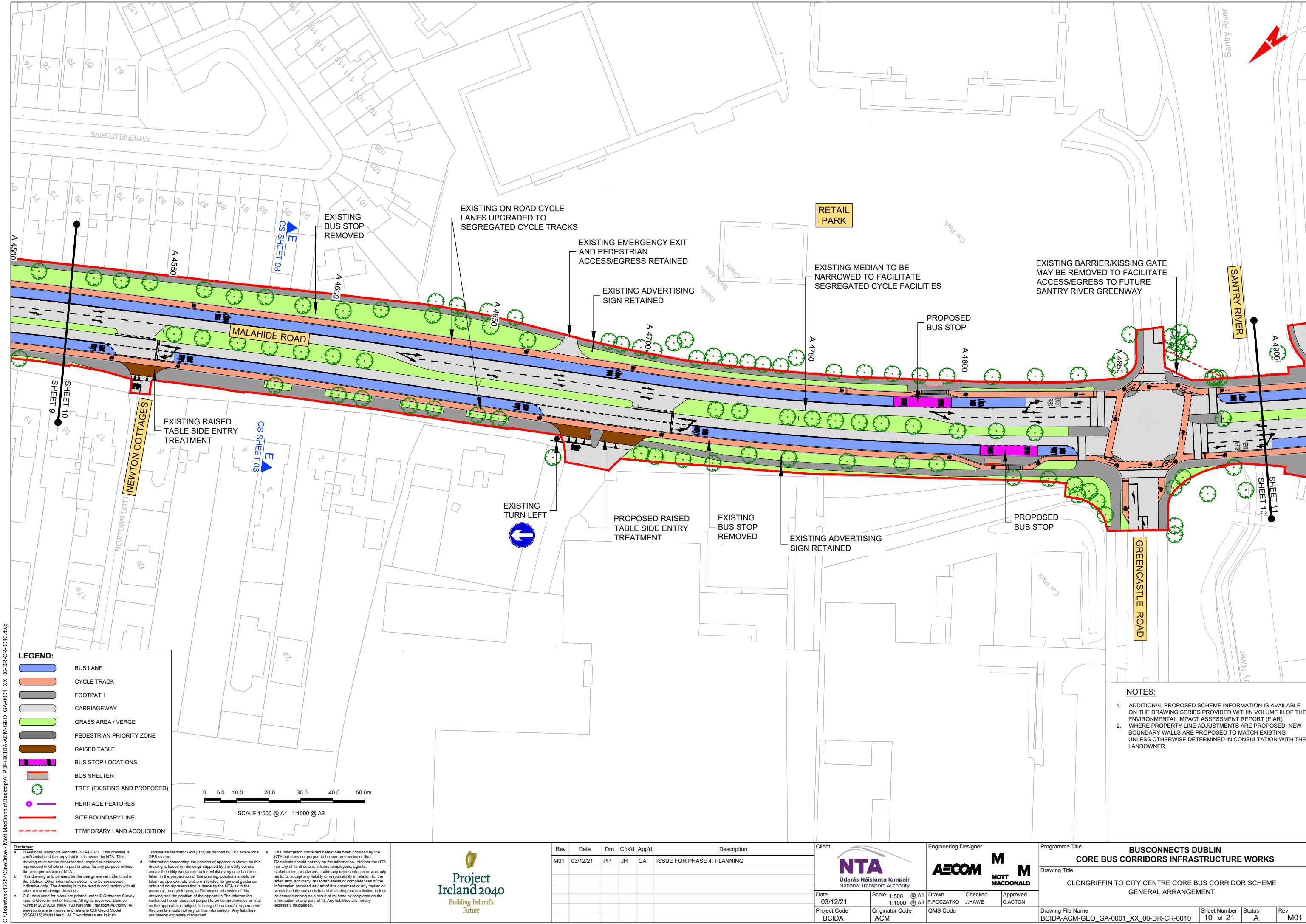
Sheet Number: 09 of 21

Status: A

Rev: M01

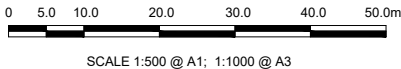
DO NOT SCALE USE FIGURED DIMENSIONS ONLY





**LEGEND:**

- BUS LANE
- CYCLE TRACK
- FOOTPATH
- CARRIAGEWAY
- GRASS AREA / VERGE
- PEDESTRIAN PRIORITY ZONE
- RAISED TABLE
- BUS STOP LOCATIONS
- BUS SHELTER
- TREE (EXISTING AND PROPOSED)
- HERITAGE FEATURES
- SITE BOUNDARY LINE
- TEMPORARY LAND ACQUISITION



- NOTES:**
- ADDITIONAL PROPOSED SCHEME INFORMATION IS AVAILABLE ON THE DRAWING SERIES PROVIDED WITHIN VOLUME III OF THE ENVIRONMENTAL IMPACT ASSESSMENT REPORT (EIAR).
  - WHERE PROPERTY LINE ADJUSTMENTS ARE PROPOSED, NEW BOUNDARY WALLS ARE PROPOSED TO MATCH EXISTING UNLESS OTHERWISE DETERMINED IN CONSULTATION WITH THE LANDOWNER.

**Disclaimer**  
a. © National Transport Authority (NTA) 2021. This drawing is confidential and the copyright in it is owned by NTA. This drawing must not be either loaned, copied or otherwise reproduced in whole or in part or used for any purpose without the prior permission of NTA.  
b. This drawing is to be used for the design element identified in the titlebox. Other information shown is to be considered indicative only. The drawing is to be read in conjunction with all other relevant design drawings.  
c. O.S. data used for plans are printed under © Ordnance Survey Ireland Government of Ireland. All rights reserved. Licence Number 2021/OS\_NMA\_180 National Transport Authority. All elevations are in metres and relate to OSI Geoid Model (OSGM15) Mean Head. All Co-ordinates are in Irish Transverse Mercator Grid (ITM) as defined by OSI active local GPS station.  
d. Information concerning the position of apparatus shown on this drawing is based on drawings supplied by the utility owners and/or the utility works contractor, whilst every care has been taken in the preparation of this drawing, positions should be taken as approximate and are intended for general guidance only and no representation is made by the NTA as to the accuracy, completeness, sufficiency or otherwise of this drawing and the position of the apparatus. The information contained herein does not purport to be comprehensive or final as the apparatus is subject to being altered and/or superseded. Recipients should not rely on this information. Any liabilities are hereby expressly disclaimed.  
e. The information contained herein has been provided by the NTA but does not purport to be comprehensive or final. Recipients should not rely on the information. Neither the NTA nor any of its directors, officers, employees, agents, stakeholders or advisers make any representation or warranty as to, or accept any liability or responsibility in relation to, the adequacy, accuracy, reasonableness or completeness of the information provided as part of this document or any matter on which the information is based (including but not limited to loss or damage arising as a result of reliance by recipients on the information or any part of it). Any liabilities are hereby expressly disclaimed.



Rev	Date	Drm	Chk'd	App'd	Description
M01	03/12/21	PP	JH	CA	ISSUE FOR PHASE 4: PLANNING

Client  
**NTA**  
Údarás Náisiúnta Iompair  
National Transport Authority

Date  
03/12/21

Project Code  
BCIDA

Scale 1:500 @ A1  
1:1000 @ A3

Originator Code  
ACM

Engineering Designer  
**AECOM** **MOTT MACDONALD**

Drawn  
P.POCZATKO

Checked  
J.HAWE

Approved  
C.ACTON

QMS Code

Programme Title  
**BUSCONNECTS DUBLIN  
CORE BUS CORRIDORS INFRASTRUCTURE WORKS**

Drawing Title  
CLONGRIFFIN TO CITY CENTRE CORE BUS CORRIDOR SCHEME  
GENERAL ARRANGEMENT

Drawing File Name  
BCIDA-ACM-GEO\_GA-0001\_XX\_00-DR-CR-0010

Sheet Number  
10 of 21

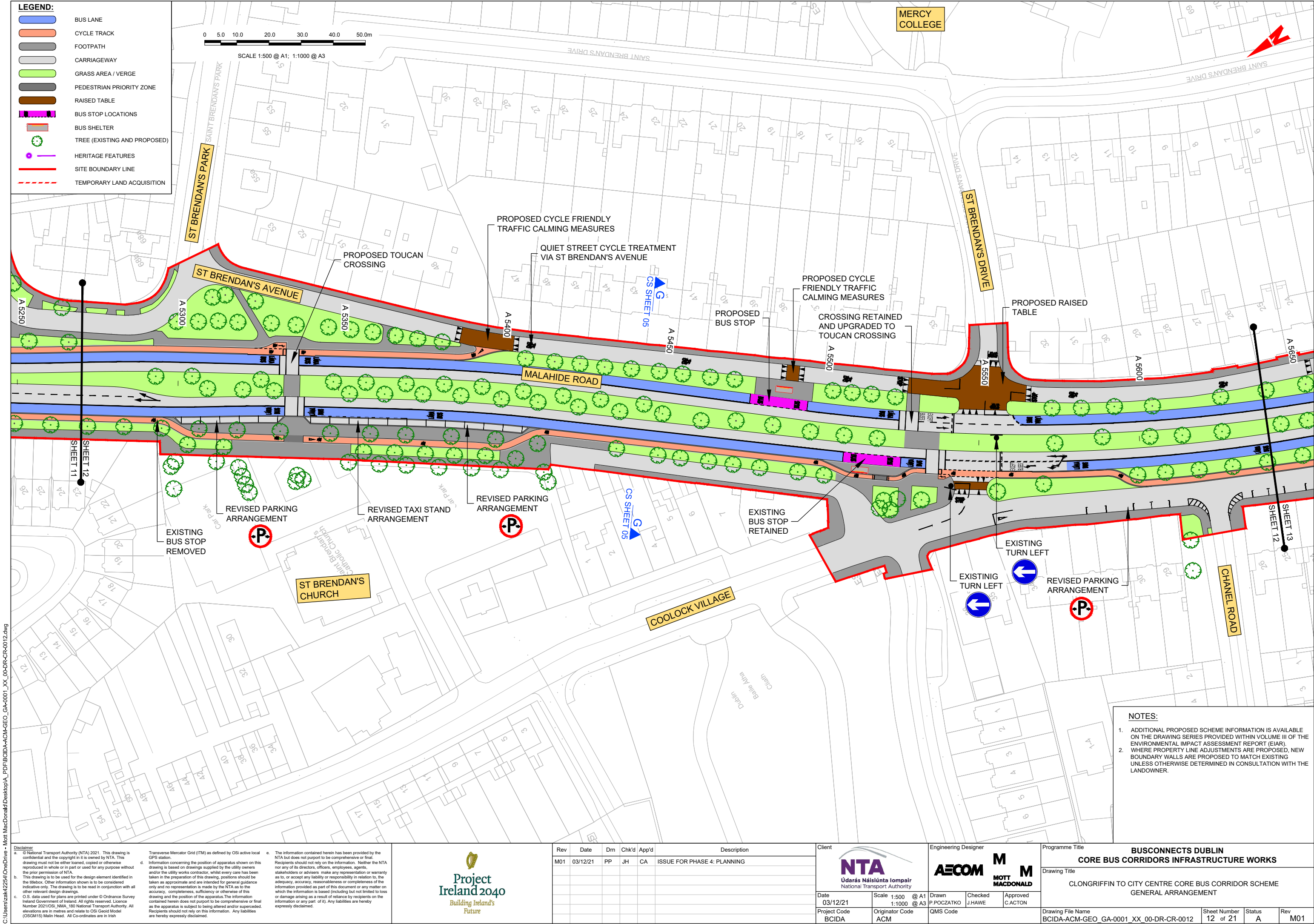
Status  
A

Rev  
M01

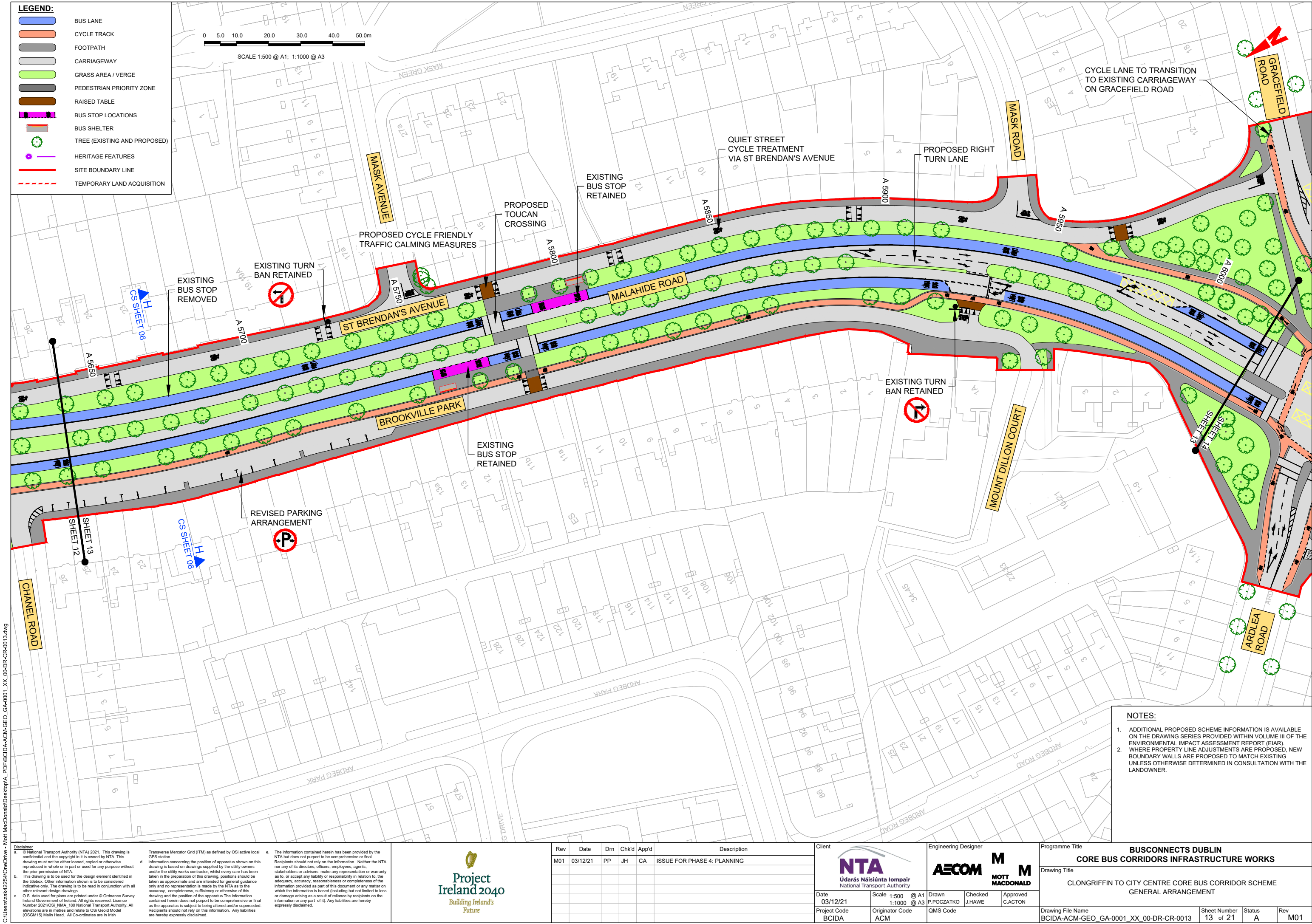




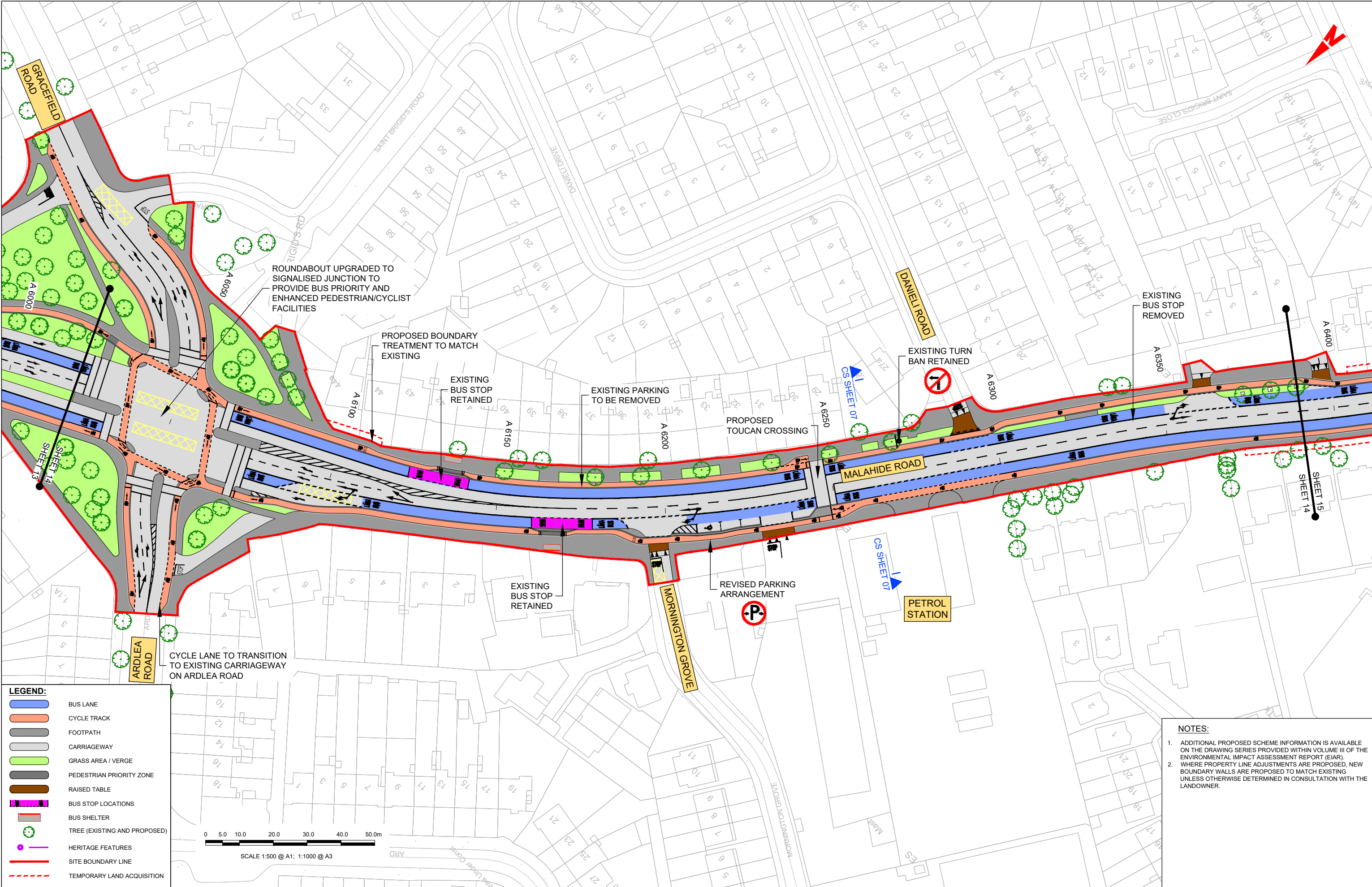






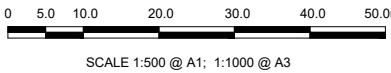






**LEGEND:**

- BUS LANE
- CYCLE TRACK
- FOOTPATH
- CARRIAGEWAY
- GRASS AREA / VERGE
- PEDESTRIAN PRIORITY ZONE
- RAISED TABLE
- BUS STOP LOCATIONS
- BUS SHELTER
- TREE (EXISTING AND PROPOSED)
- HERITAGE FEATURES
- SITE BOUNDARY LINE
- TEMPORARY LAND ACQUISITION



- NOTES:**
- ADDITIONAL PROPOSED SCHEME INFORMATION IS AVAILABLE ON THE DRAWING SERIES PROVIDED WITHIN VOLUME III OF THE ENVIRONMENTAL IMPACT ASSESSMENT REPORT (EIAR).
  - WHERE PROPERTY LINE ADJUSTMENTS ARE PROPOSED, NEW BOUNDARY WALLS ARE PROPOSED TO MATCH EXISTING UNLESS OTHERWISE DETERMINED IN CONSULTATION WITH THE LANDOWNER.

**Disclaimer**  
a. © National Transport Authority (NTA) 2021. This drawing is confidential and the copyright in it is owned by NTA. This drawing must not be either loaned, copied or otherwise reproduced in whole or in part or used for any purpose without the prior permission of NTA.  
b. This drawing is to be used for the design element identified in the titlebox. Other information shown is to be considered indicative only. The drawing is to be read in conjunction with all other relevant design drawings.  
c. O.S. data used for plans are printed under © Ordnance Survey Ireland Government of Ireland. All rights reserved. Licence Number 2021/OSI\_NMA\_180 National Transport Authority. All elevations are in metres and relate to OSI Geoid Model (OSGM15) Mean Head. All Co-ordinates are in Irish Transverse Mercator Grid (ITM) as defined by OSI active local GPS station.  
d. Information concerning the position of apparatus shown on this drawing is based on drawings supplied by the utility owners and/or the utility works contractor, whilst every care has been taken in the preparation of this drawing, positions should be taken as approximate and are intended for general guidance only and no representation is made by the NTA as to the accuracy, completeness, sufficiency or otherwise of this drawing and the position of the apparatus. The information contained herein does not purport to be comprehensive or final as the apparatus is subject to being altered and/or superseded. Recipients should not rely on this information. Any liabilities are hereby expressly disclaimed.  
e. The information contained herein has been provided by the NTA but does not purport to be comprehensive or final. Recipients should not rely on the information. Neither the NTA nor any of its directors, officers, employees, agents, stakeholders or advisers make any representation or warranty as to, or accept any liability or responsibility in relation to, the adequacy, accuracy, reasonableness or completeness of the information provided as part of this document or any matter on which the information is based (including but not limited to loss or damage arising as a result of reliance by recipients on the information or any part of it). Any liabilities are hereby expressly disclaimed.



Rev	Date	Drm	Chk'd	App'd	Description
M01	03/12/21	PP	JH	CA	ISSUE FOR PHASE 4: PLANNING

Údarás Náisiúnta Iompair  
National Transport Authority

Date  
03/12/21

Project Code  
BCIDA

Scale  
1:500 @ A1  
1:1000 @ A3

Originator Code  
ACM

Engineering Designer  
**AECOM**

Checked  
J.HAWE

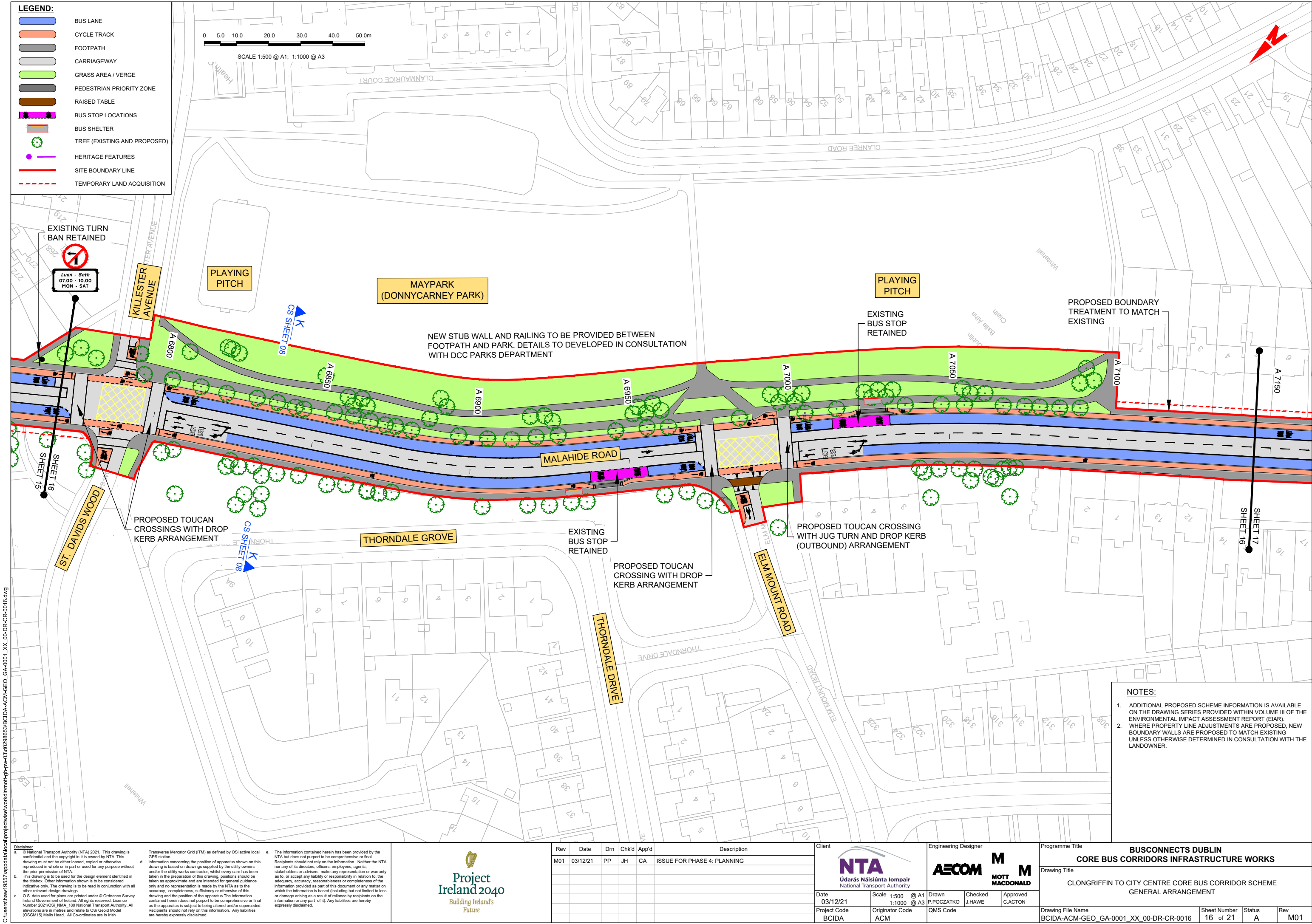
Approved  
C.ACTON

Programme Title <b>BUSCONNECTS DUBLIN CORE BUS CORRIDORS INFRASTRUCTURE WORKS</b>	Sheet Number 14 of 21	Status A	Rev M01
Drawing Title CLONGRIFFIN TO CITY CENTRE CORE BUS CORRIDOR SCHEME GENERAL ARRANGEMENT	Drawing File Name BCIDA-ACM-GEO_GA-0001_XX_00-DR-CR-0014		









C:\Users\haw19557\appdata\local\projectwise\work\in\mof-gb-pw-03\40298653\BCIDA-ACM-GEO\_GA-0001\_XX\_00-DR-CR-0016.dwg

**Disclaimer**

a. © National Transport Authority (NTA) 2021. This drawing is confidential and the copyright in it is owned by NTA. This drawing must not be either loaned, copied or otherwise reproduced in whole or in part or used for any purpose without the prior permission of NTA.

b. This drawing is to be used for the design element identified in the titlebox. Other information shown is to be considered indicative only. The drawing is to be read in conjunction with all other relevant design drawings.

c. O.S. data used for plans are printed under © Ordnance Survey Ireland Government of Ireland. All rights reserved. Licence Number 2021/O.S.\_NMA\_180 National Transport Authority. All elevations are in metres and relate to OSI Geoid Model (OSGM15) Mean Head. All Co-ordinates are in Irish Transverse Mercator Grid (ITM) as defined by OSI active local GPS station.

d. Information concerning the position of apparatus shown on this drawing is based on drawings supplied by the utility owners and/or the utility works contractor, whilst every care has been taken in the preparation of this drawing, positions should be taken as approximate and are intended for general guidance only and no representation is made by the NTA as to the accuracy, completeness, sufficiency or otherwise of this drawing and the position of the apparatus. The information contained herein does not purport to be comprehensive or final as the apparatus is subject to being altered and/or superceded. Recipients should not rely on this information. Any liabilities are hereby expressly disclaimed.

e. The information contained herein has been provided by the NTA but does not purport to be comprehensive or final. Recipients should not rely on the information. Neither the NTA nor any of its directors, officers, employees, agents, stakeholders or advisers make any representation or warranty as to, or accept any liability or responsibility in relation to, the adequacy, accuracy, reasonableness or completeness of the information provided as part of this document or any matter on which the information is based (including but not limited to loss or damage arising as a result of reliance by recipients on the information or any part of it). Any liabilities are hereby expressly disclaimed.

Project Ireland 2040  
Building Ireland's Future

Rev	Date	Dwn	Chk'd	App'd	Description
M01	03/12/21	PP	JH	CA	ISSUE FOR PHASE 4: PLANNING

**Client**

Údarás Náisiúnta Iompair  
National Transport Authority

Date: 03/12/21  
Project Code: BCIDA

Scale: 1:500 @ A1  
1:1000 @ A3

Originator Code: ACM

**Engineering Designer**

**MOTT MACDONALD**

Drawn: P.POCZATKO  
Checked: J.HAWE  
Approved: C.ACTON

**Programme Title**

**BUSCONNECTS DUBLIN  
CORE BUS CORRIDORS INFRASTRUCTURE WORKS**

**Drawing Title**

**CLONGRIFFIN TO CITY CENTRE CORE BUS CORRIDOR SCHEME  
GENERAL ARRANGEMENT**

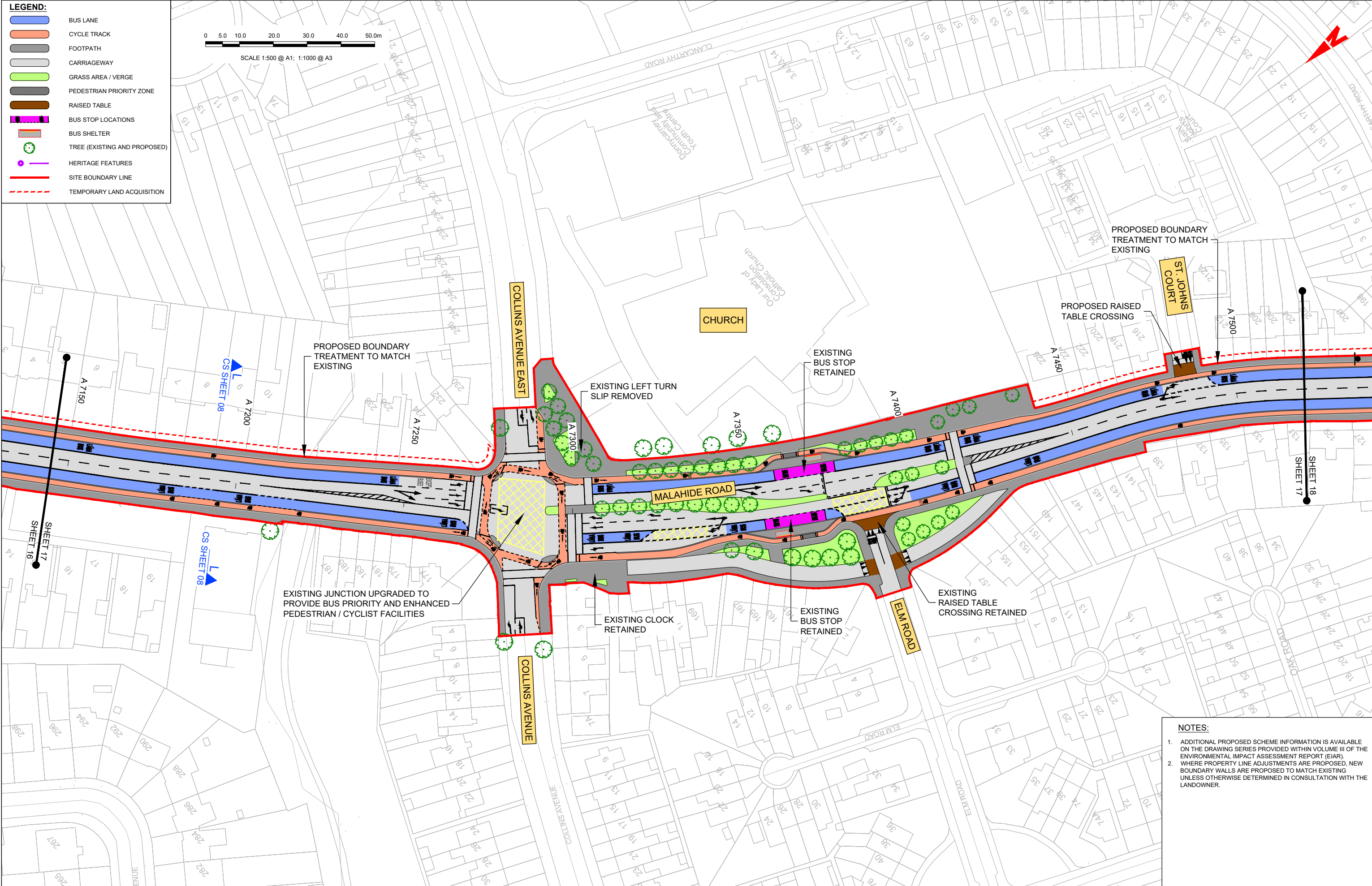
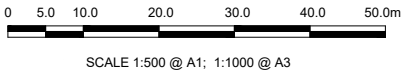
Drawing File Name: BCIDA-ACM-GEO\_GA-0001\_XX\_00-DR-CR-0016  
Sheet Number: 16 of 21  
Status: A  
Rev: M01

DO NOT SCALE USE FIGURED DIMENSIONS ONLY



**LEGEND:**

- BUS LANE
- CYCLE TRACK
- FOOTPATH
- CARRIAGEWAY
- GRASS AREA / VERGE
- PEDESTRIAN PRIORITY ZONE
- RAISED TABLE
- BUS STOP LOCATIONS
- BUS SHELTER
- TREE (EXISTING AND PROPOSED)
- HERITAGE FEATURES
- SITE BOUNDARY LINE
- TEMPORARY LAND ACQUISITION



- NOTES:**
- ADDITIONAL PROPOSED SCHEME INFORMATION IS AVAILABLE ON THE DRAWING SERIES PROVIDED WITHIN VOLUME III OF THE ENVIRONMENTAL IMPACT ASSESSMENT REPORT (EIAR).
  - WHERE PROPERTY LINE ADJUSTMENTS ARE PROPOSED, NEW BOUNDARY WALLS ARE PROPOSED TO MATCH EXISTING UNLESS OTHERWISE DETERMINED IN CONSULTATION WITH THE LANDOWNER.

**Disclaimer**

a. © National Transport Authority (NTA) 2021. This drawing is confidential and the copyright in it is owned by NTA. This drawing must not be either loaned, copied or otherwise reproduced in whole or in part or used for any purpose without the prior permission of NTA.

b. This drawing is to be used for the design element identified in the titleblock. Other information shown is to be considered indicative only. The drawing is to be read in conjunction with all other relevant design drawings.

c. O.S. data used for plans are printed under © Ordnance Survey Ireland Government of Ireland. All rights reserved. Licence Number 2021/OSI\_NMA\_180 National Transport Authority. All elevations are in metres and relate to OSI Geoid Model (OSGM15) Mean Head. All Co-ordinates are in Irish Transverse Mercator Grid (ITM) as defined by OSI active local GPS station.

d. Information concerning the position of apparatus shown on this drawing is based on drawings supplied by the utility owners and/or the utility works contractor, whilst every care has been taken in the preparation of this drawing, positions should be taken as approximate and are intended for general guidance only and no representation is made by the NTA as to the accuracy, completeness, sufficiency or otherwise of this drawing and the position of the apparatus. The information contained herein does not purport to be comprehensive or final as the apparatus is subject to being altered and/or superceded. Recipients should not rely on this information. Any liabilities are hereby expressly disclaimed.

e. The information contained herein has been provided by the NTA but does not purport to be comprehensive or final. Recipients should not rely on the information. Neither the NTA nor any of its directors, officers, employees, agents, stakeholders or advisers make any representation or warranty as to, or accept any liability or responsibility in relation to, the adequacy, accuracy, reasonableness or completeness of the information provided as part of this document or any matter on which the information is based (including but not limited to loss or damage arising as a result of reliance by recipients on the information or any part of it). Any liabilities are hereby expressly disclaimed.



Rev	Date	Drm	Chk'd	App'd	Description
M01	03/12/21	PP	JH	CA	ISSUE FOR PHASE 4: PLANNING

Client

**NTA**  
Údarás Náisiúnta Iompair  
National Transport Authority

Date 03/12/21

Scale 1:500 @ A1  
1:1000 @ A3

Project Code BCIDA

Originator Code ACM

Engineering Designer

**AECOM**

**MOTT MACDONALD**

Drawn P.POCZATKO

Checked J.HAWE

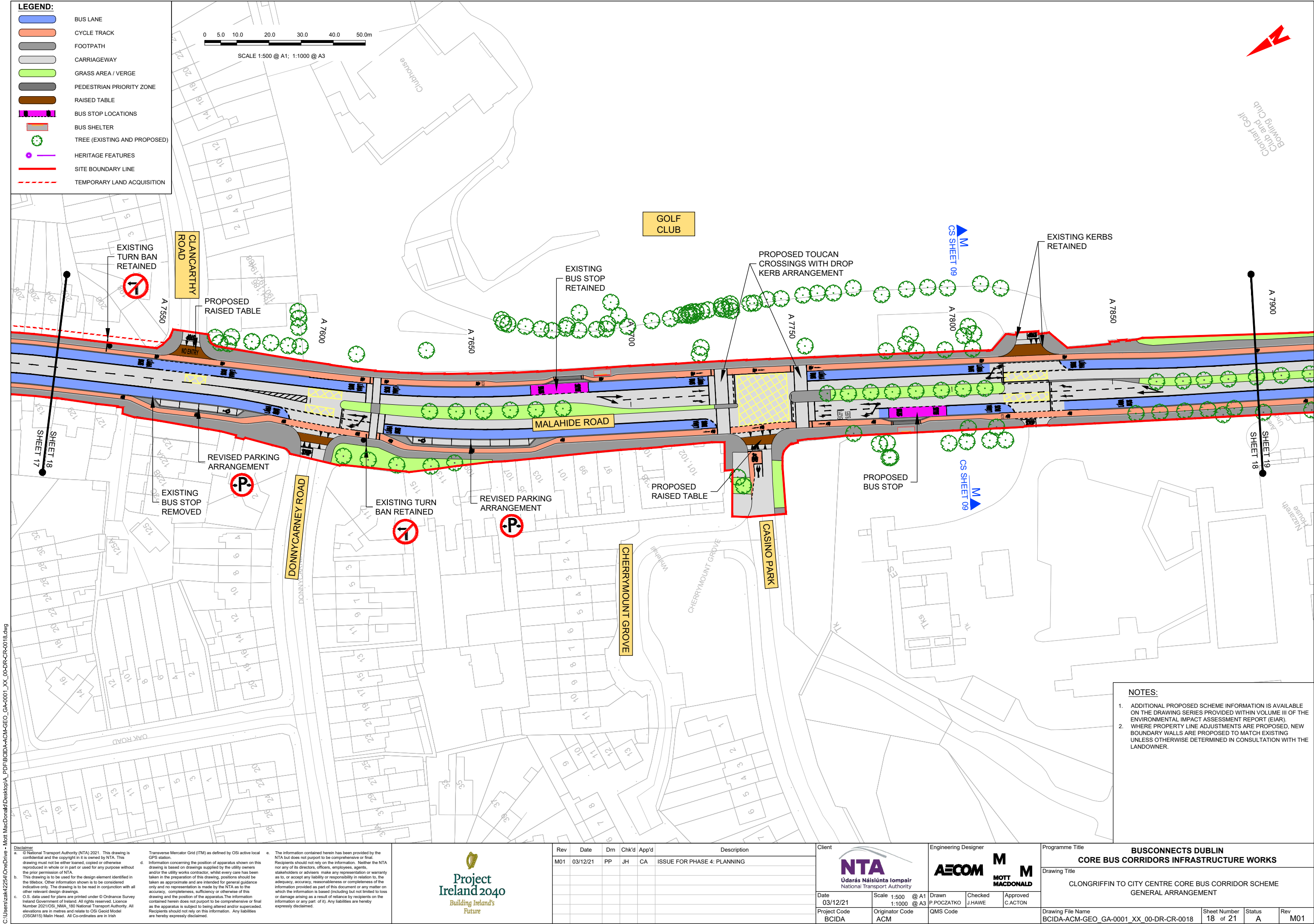
Approved C.ACTON

QMS Code

Programme Title <b>BUSCONNECTS DUBLIN CORE BUS CORRIDORS INFRASTRUCTURE WORKS</b>			
Drawing Title CLONGRIFFIN TO CITY CENTRE CORE BUS CORRIDOR SCHEME GENERAL ARRANGEMENT			
Drawing File Name BCIDA-ACM-GEO_GA-0001_XX_00-DR-CR-0017	Sheet Number 17 of 21	Status A	Rev M01

DO NOT SCALE USE FIGURED DIMENSIONS ONLY



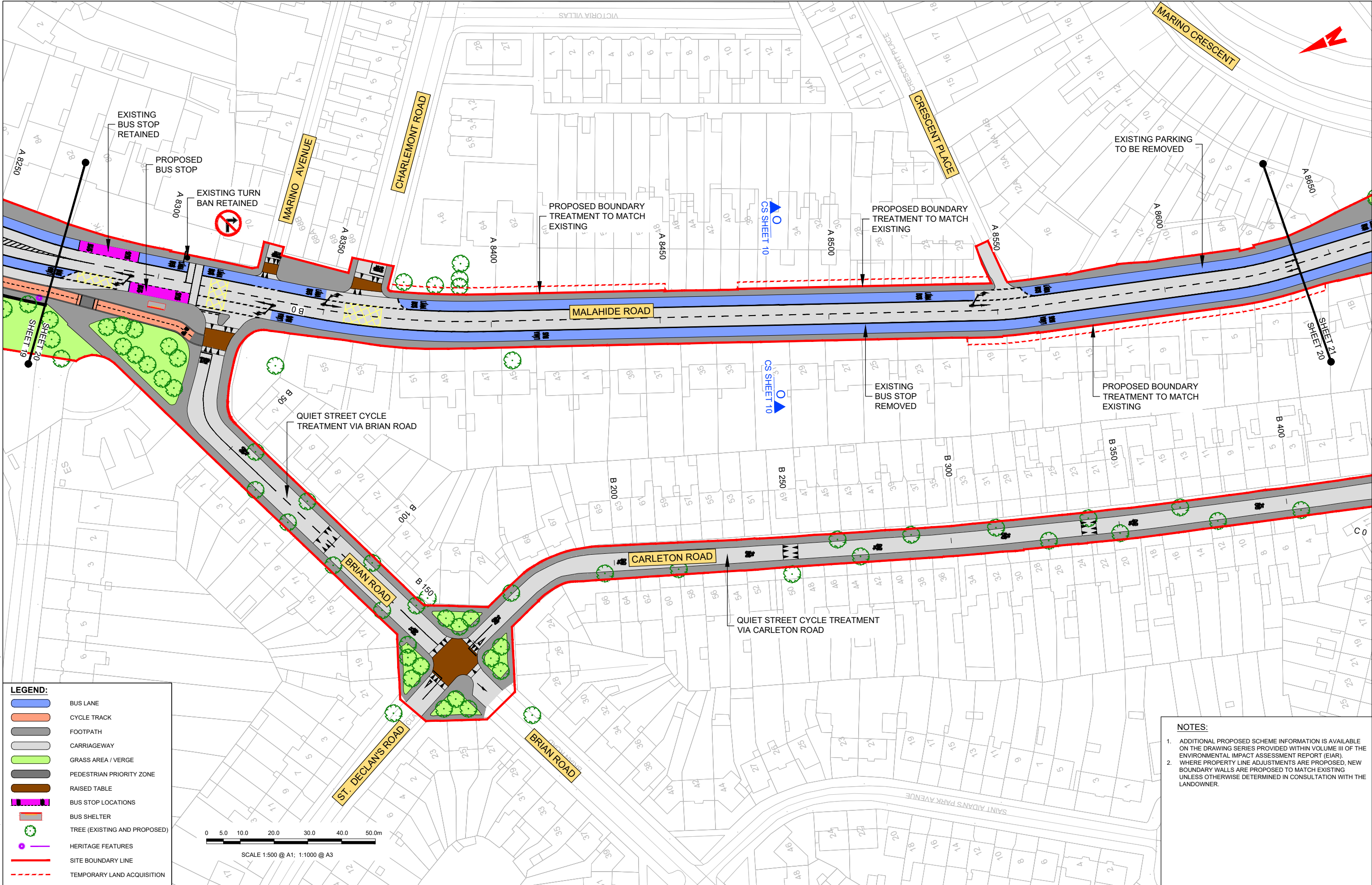


C:\Users\zak42254\OneDrive - Mott MacDonald\Desktop\A\_PDF\BCIDA-ACM-GEO\_GA-0001\_XX\_00-DR-CR-0018.dwg



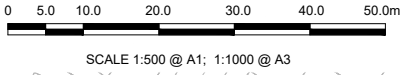






**LEGEND:**

- BUS LANE
- CYCLE TRACK
- FOOTPATH
- CARRIAGEWAY
- GRASS AREA / VERGE
- PEDESTRIAN PRIORITY ZONE
- RAISED TABLE
- BUS STOP LOCATIONS
- BUS SHELTER
- TREE (EXISTING AND PROPOSED)
- HERITAGE FEATURES
- SITE BOUNDARY LINE
- TEMPORARY LAND ACQUISITION



- NOTES:**
- ADDITIONAL PROPOSED SCHEME INFORMATION IS AVAILABLE ON THE DRAWING SERIES PROVIDED WITHIN VOLUME III OF THE ENVIRONMENTAL IMPACT ASSESSMENT REPORT (EIA).
  - WHERE PROPERTY LINE ADJUSTMENTS ARE PROPOSED, NEW BOUNDARY WALLS ARE PROPOSED TO MATCH EXISTING UNLESS OTHERWISE DETERMINED IN CONSULTATION WITH THE LANDOWNER.

Disclaimer

a. © National Transport Authority (NTA) 2021. This drawing is confidential and the copyright in it is owned by NTA. This drawing must not be either loaned, copied or otherwise reproduced in whole or in part or used for any purpose without the prior permission of NTA.

b. This drawing is to be used for the design element identified in the titleblock. Other information shown is to be considered indicative only. The drawing is to be read in conjunction with all other relevant design drawings.

c. O.S. data used for plans are printed under © Ordnance Survey Ireland Government of Ireland. All rights reserved. Licence Number 2021/OSI\_NMA\_180 National Transport Authority. All elevations are in metres and relate to OSI Geoid Model (OSGM15) Mean Head. All Co-ordinates are in Irish Transverse Mercator Grid (ITM) as defined by OSI active local GPS station.

d. The information contained herein has been provided by the NTA but does not purport to be comprehensive or final. Recipients should not rely on the information. Neither the NTA nor any of its directors, officers, employees, agents, stakeholders or advisers make any representation or warranty as to, or accept any liability or responsibility in relation to, the adequacy, accuracy, reasonableness or completeness of the information provided as part of this document or any matter on which the information is based (including but not limited to loss or damage arising as a result of reliance by recipients on the information or any part of it). Any liabilities are hereby expressly disclaimed.

Building Ireland's Future

Rev	Date	Drm	Chk'd	App'd	Description
M01	03/12/21	PP	JH	CA	ISSUE FOR PHASE 4: PLANNING

Client

Údarás Náisiúnta Iompair  
National Transport Authority

Date 03/12/21

Scale 1:500 @ A1  
1:1000 @ A3

Project Code BCIDA

Originator Code ACM

Engineering Designer

MOTT MACDONALD

Drawn P.POCZATKO

Checked J.HAWE

Approved C.ACTON

Programme Title

**BUSCONNECTS DUBLIN**

**CORE BUS CORRIDORS INFRASTRUCTURE WORKS**

Drawing Title

CLONGRIFFIN TO CITY CENTRE CORE BUS CORRIDOR SCHEME

GENERAL ARRANGEMENT

Drawing File Name

BCIDA-ACM-GEO\_GA-0001\_XX\_00-DR-CR-0020

Sheet Number

20 of 21

Status

A

Rev

M01

DO NOT SCALE USE FIGURED DIMENSIONS ONLY









Údarás Náisiúnta Iompair  
National Transport Authority

National Transport Authority  
Dún Scéine  
Harcourt Lane  
Dublin 2  
D02 WT20



Project Ireland 2040  
Building Ireland's Future